

# CASE STUDY

N° 1108/9



## (36 x 18 x 9MTR) & (11 x 6 x 4MTR) GRAIN PROCESSING SHEDS

<b>CLIENT</b>	IL Kitto & Co.
<b>COMPLETED</b>	June, 2011
<b>PURPOSE</b>	Grain Processing & Storage
<b>LOCATION</b>	Eradu, Western Australia



### PROJECT BRIEF

The client farms 8000 hectares of Casuarina sand plain country just 90km from the port of Geraldton in the district of Eradu. To take advantage of better marketing opportunities for their lupin harvests the client decided in 2011 to invest in on-farm storage and processing facilities which included sheds. High clearance for processing plant and machinery, good door operational access along with sufficient ventilation were to be incorporated into the shed design proposal.

### WHEATBELT STEEL'S ANSWER

The sheds designed and erected were a fully enclosed (36m x 18m x 9m) shed for the main processing machinery operation with 12mtr clearspan and doors on the side and end of shed. A smaller (11m x 6m x 4m) plant room shed with ridge and wall vents to achieve the ventilation requirements. The sheds were fully insulated to keep internal working temperatures as optimum as possible.

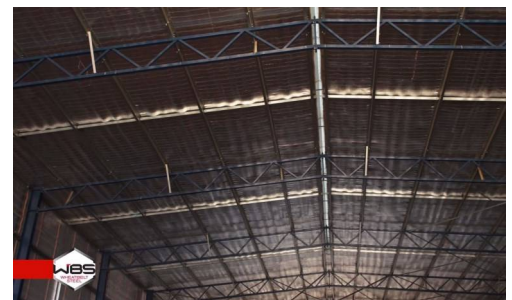
### CLIENT'S WORDS

*"We decided to build this shed because we are moving on with our grain processing venture that we are doing here on the farm. They listened intently to what we needed for the construction of the shed. They were very good, very professional right through from drafting the shed, to the guys who delivered the shed, to the guys that constructed the shed it all flowed very well. I would have no hesitation whatsoever in recommending Wheatbelt Steel sheds to anybody who is looking to buy a new shed, they are very professional with what they do and they are more than happy to accommodate client suggestions"*

– Rob Kitto, Owner



Fully Enclosed (36 x 18 x 9MTR)



Parallel Chord Web Trusses

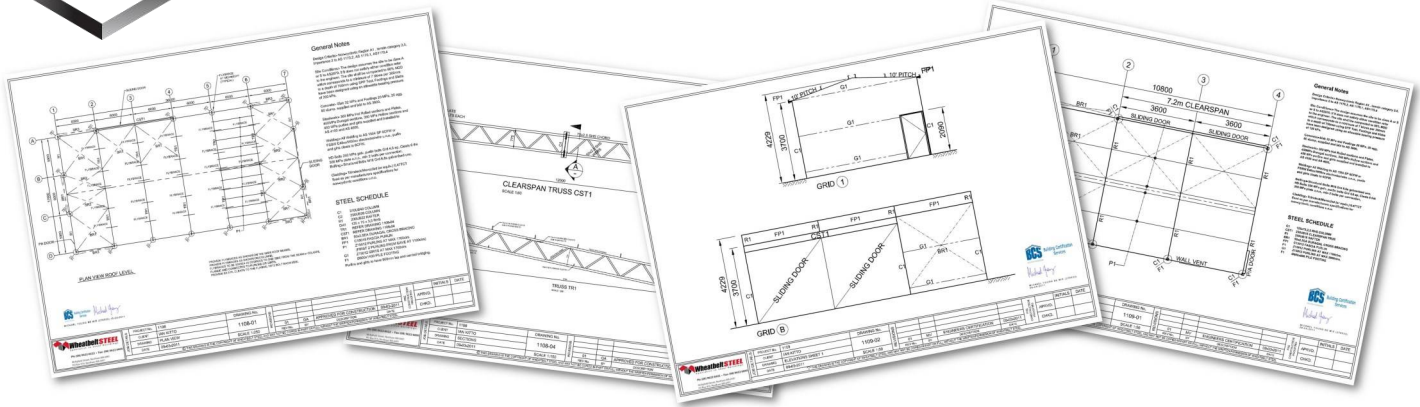


Client - Rob Kitto



**BUILDING SHEDS  
SINCE 1982**

*It's the Real shed.*



## SPECIFICATIONS

### CONFIGURATION & DIMENSIONS

<b>Configuration</b>	Fully Enclosed
<b>Overall Dimensions (L x W x H)</b>	36 x 18 x 9m / 11 x 6 x 4m (L x W x H)
<b>Bay Spacing</b>	6m / 3.6m
<b>Clearance Height</b>	8.5m / 3.5m

### CONSTRUCTION

<b>Column Construction</b>	Universal Beam (RSJ) / RHS
<b>Rafter Construction</b>	Parallel Cord Web Truss / Universal Beam (RSJ)
<b>Steelwork Treatment</b>	Shot Blasted Class 2 - Painted Industrial Enamel 75 Microns

### CLADDING, GUTTERS & DOWNPIPES

<b>Cladding Profile</b>	Colorbond®, 0.47 TCT
<b>Roof Cladding Finish</b>	Colorbond®, 0.47 TCT
<b>Wall cladding Finish</b>	Colorbond®, 0.47 TCT
<b>Gutter Finish</b>	Colorbond®
<b>Downpipe Finish</b>	PVC
<b>Flashing Finish</b>	Colorbond®

### CUSTOM FEATURES

<b>Doors &amp; Openings</b>	1 x 12m / 1 x 7.2m Clearspan 2 x 6m & 2 x 4.5m / 2 x 3.6m Sliding Doors 3 x PA Doors
<b>Other</b>	Ridge & Wall Vents



**Shed & Silo Storage Setup**



**Vented Plant Shed (11m x 6m x 4m)**



**Aerial View**